

# *Harris*

## *Family Center*

*Celebration of Life*  
*Pricing and Menu Options*



*The Family Center is available for Funeral Receptions,  
Memorial Services, Bridal and Baby Showers*



## *Use of Harris Family Center for families served by Harris Funeral Home*

### ***Memorial Reception***

A reception that typically follows a funeral or memorial service. Includes three hour use, hostess, setup and clean-up. Coffee, tea, and citrus water. China and silverware (menu item depending), paper products.

***\$250 for facility plus food***

### ***Memorial Reception***

*w/ your own Licensed Caterer*

A reception that typically follows a funeral or memorial service. Includes three hour use, hostess, setup and clean-up. Coffee, tea, and citrus water. China and silverware, paper products.

***\$300 for the facility plus your food cost***

### ***Memorial Calling Hours***

Includes use of the building and supervision for the calling hours. Coffee, tea, and citrus water. You can also add food and beverage from our menu.

***\$550 - 2 Hours***

***\$725 - 3 Hours***

***\$900 - 4 Hours***

### ***Celebration of Life Services***

Includes two hour use of the facility and supervision of the service. Coffee, tea, and citrus water.

\*Reception with food to follow, please add \$250 plus food.

***\$550 for facility plus food***

## *Use of Harris Family Center for families served by other funeral homes*

### ***Memorial Reception***

A reception that typically follows a funeral or memorial service. Includes three hour use, hostess, setup and clean-up. Coffee, tea, and citrus water. China and silverware (menu item depending), paper products.

***\$250 for facility plus food***

***\$500 Coordinating fee***

### ***Memorial Calling Hours***

Includes use of the building and supervision for the calling hours. Coffee, tea, and citrus water. You can also add food and beverage from our menu.

***\$550 - 2 Hours***

***\$725 - 3 Hours***

***\$900 - 4 Hours***

***\$750 Coordinating fee***

### ***Celebration of Life Services***

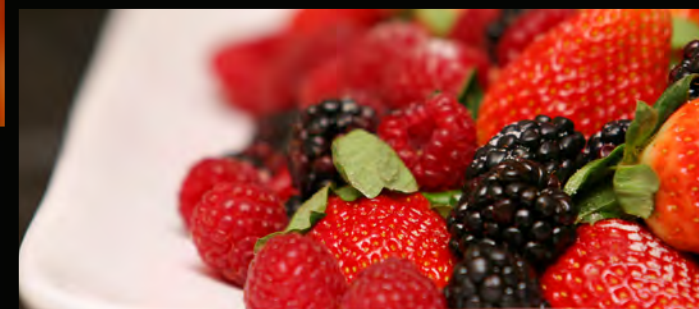
Includes a two hour use of the facility and supervision of the service. Coffee, tea, and citrus water.

\*Reception with food to follow, please add \$250 plus food.

***\$550 for facility plus food***

***\$750 Coordinating fee***





**Hors d'Oeuvres** is the most common choice directly following calling hours - a light option allowing conversation and memories to continue.

**Share and Enjoy** Mini meatballs marinara, Italian sausage bites with onions and peppers, artichokes French, cheese display garnished with carrots, cucumber, colorful peppers, and olives served with crackers and baguettes. Assorted cookies and cream puffs.

**Always Included** Beverage assortment.

**Spirits** Beer and wine is allowed, however the Harris Family Center can not provide nor serve.

## Appetizers

People	Price*
25	\$350
30	\$420
35	\$490
40	\$560
45	\$630
50	\$700
55	\$770
60	\$840

For less than 25 people or more than 60, please ask for assistance in pricing.

\*Prices are estimated and do not include tax. Prices are subject to change.



The *light lunch* is a popular choice following a funeral/ memorial service. This option leaves the choice up to your guest – with a wide variety of sandwiches everyone will find something to suite their taste.

***Rolls and Croissants*** Assorted sandwiches to include turkey, ham and cheese, roast beef, tuna, and vegetarian (optional).

***Choose One Salad*** Caesar, garden, macaroni, potato, pasta, or fruit.

***Delicious Desserts*** Assorted cookies.

***Always Included*** Beverage assortment.

***Add-Ons*** Add an additional salad for \$3.00 per person.

***Spirits*** Beer and wine is allowed, however the Harris Family Center can not provide nor serve.

# Lunch

People	Price*
25	\$400
30	\$480
35	\$560
40	\$640
45	\$720
50	\$800
55	\$880
60	\$960

For less than 25 people or more than 60, please ask for assistance in pricing.

\*Prices are estimated and do not include tax. Prices are subject to change.



The ***finger fare*** is a wonderful choice after calling hours or following a memorial service/ funeral service. An extensive selection of mini gourmet sandwiches allows guest to graze.

***Mini Gourmet Sandwiches***

Fresh roasted turkey breast with baby spinach and an avocado spread served on a mountain roll.  
 Shaved honey ham with Swiss cheese and champagne mustard served on a fresh baked croissant.  
 Rotisserie chicken salad with grapes and poppyseed dressing served on a fresh baked croissant.

***Cheese Display*** with Crackers.

***Fresh Fruit Display***

***Delicious Desserts*** Assorted cookies and brownies.

***Always Included*** Beverage assortment.

***Spirits*** Beer and wine is allowed, however the Harris Family Center can not provide nor serve.

***Finger Fare***

People	Price*
25	\$425
30	\$510
35	\$595
40	\$680
45	\$765
50	\$850
55	\$935
60	\$1,020

For less than 25 people or more than 60, please ask for assistance in pricing.

\*Prices are estimated and do not include tax. Prices are subject to change.



The **buffet** is our most popular choice following a funeral/ memorial service.

**Choose One Entree** Chicken French, fresh carved turkey breast, roast beef with au jus, baked ham with pineapple and ham gravy, oven roasted lemon chicken, pork tenderloin.

**Choose One Hot Side** Mashed potatoes, jasmine rice, pasta vodka, penne with red sauce, sausage with peppers and onions, or mixed fresh vegetables.

**Desserts** Assorted cookies and cream puffs.

**Always Included** Beverage assortment, salad, rolls and butter.

**Add-Ons** Add an additional side for \$2.00 per person. Add an additional entree for \$4.00 per person.

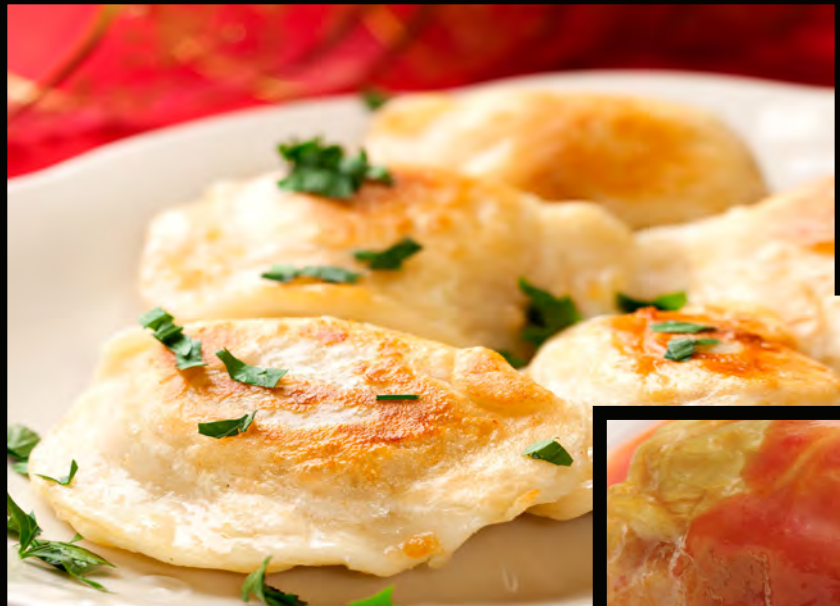
**Spirits** Beer and wine is allowed, however the Harris Family Center can not provide nor serve.

# Buffet

People	Price*
25	\$375
30	\$450
35	\$525
40	\$600
45	\$675
50	\$750
55	\$825
60	\$900

For less than 25 people or more than 60, please ask for assistance in pricing.

\*Prices are estimated and do not include tax. Prices are subject to change.



Our *ukrainian / polish* food will bring you home. These authentically prepared dishes will warm your heart as well as your stomach.

***Dinner to Include***

- Smoked Polish Sausage with Onions
- Holubchi / Golabki (Stuffed Cabbage Rolls)
- Kapusta (Hunters Stew)
- Pierogi / Varenyky
- Rye Bread
- Apple Streuddel

People	Price*
20	\$300
40	\$600
60	\$800

For less than 20 people or more than 60, please ask for assistance in pricing.

\*Prices are estimated and do not include tax. Prices are subject to change.

***Always Included*** Beverage assortment, including coffee, tea, and citrus infused water.

***Spirits*** Beer and wine is allowed, however the Harris Family Center can not provide nor serve.

# Cookies

The *just cookies* is our most popular choice for after an evening service.

People	Price
25	\$50
30	\$70
35	\$90
40	\$110
45	\$130
50	\$150
55	\$170
60	\$190

**Assortment of Cookies** with a ginger ale sherbet punch.

**Always Included** Beverage assortment, including coffee, tea, and citrus infused water.



For less than 25 people or more than 60, please ask for assistance in pricing.

The *dessert delight* is the preferred choice for in between meal times.

**Assortment of Desserts** Fresh fruit display with dip, homemade brownies, homemade fancy cookies, mini cupcake assortment, and sherbet punch.

**Always Included** Beverage assortment, including coffee, tea, and citrus infused water.

**Spirits** Beer and wine is allowed, however the Harris Family Center can not provide nor serve.

# Dessert

People	Price*
25	\$200
30	\$240
35	\$280
40	\$280
45	\$320
50	\$360
55	\$400
60	\$440

For less than 25 people or more than 60, please ask for assistance in pricing.

\*Prices are estimated and do not include tax. Prices are subject to change.



HarrisFuneralHome.com | (585) 544-2041  
570 Kings Highway South (*Corner of Titus Avenue*) Rochester, New York 14617